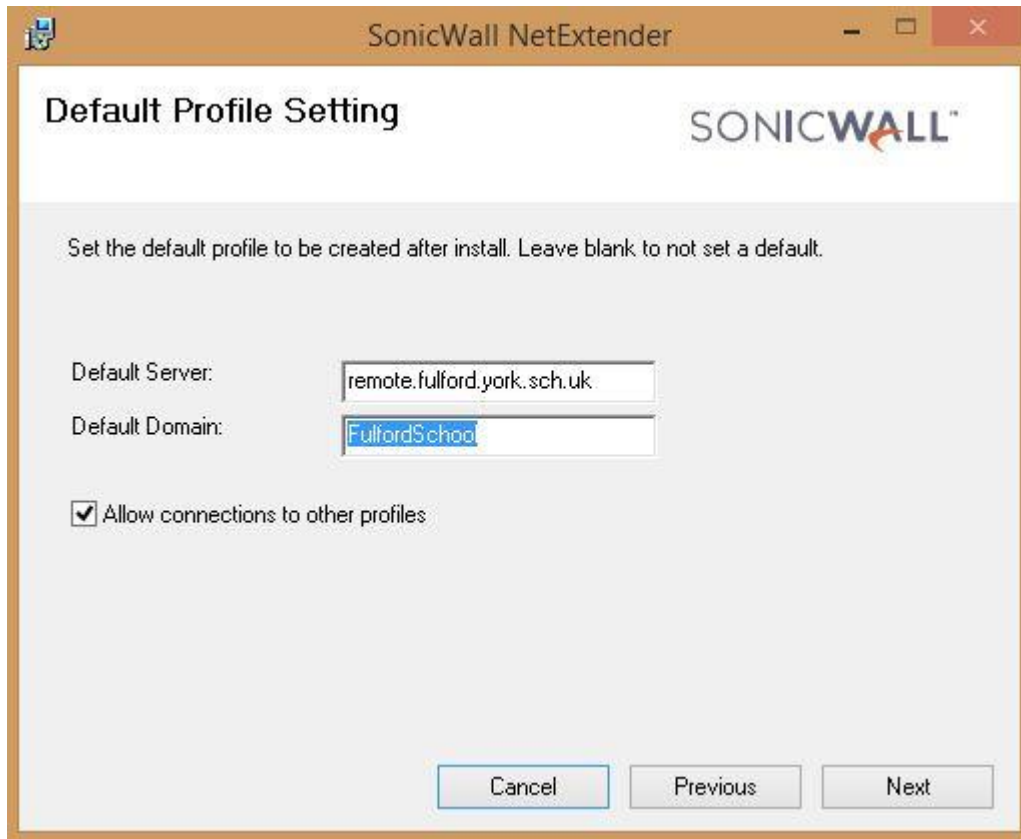


NetExtender User Guide

Install

1. Download the NetExtender installer by clicking [here](#).
2. Once downloaded, run the installer.
3. Click Next a few times and leave the default installation folder.
4. On the Default Profile Setting page, enter:

Default Server: remote.fulford.york.sch.uk
Default Domain: FulfordSchool (Case-sensitive)



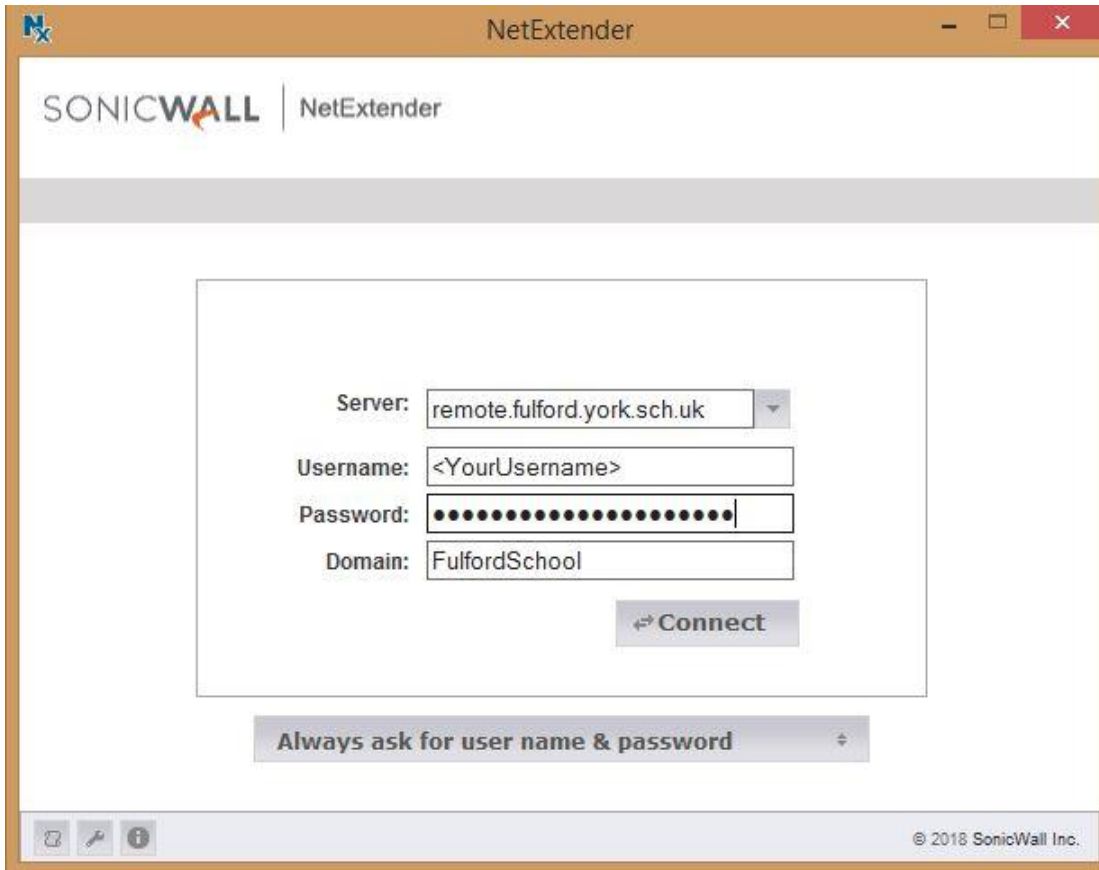
5. Click next a few more times to complete the setup.
6. You may be prompted to install a device driver, click Install like in the image below:



7. It is recommended that you restart your computer now, the NetExtender may not work if you don't. Installation is now complete.

Connect

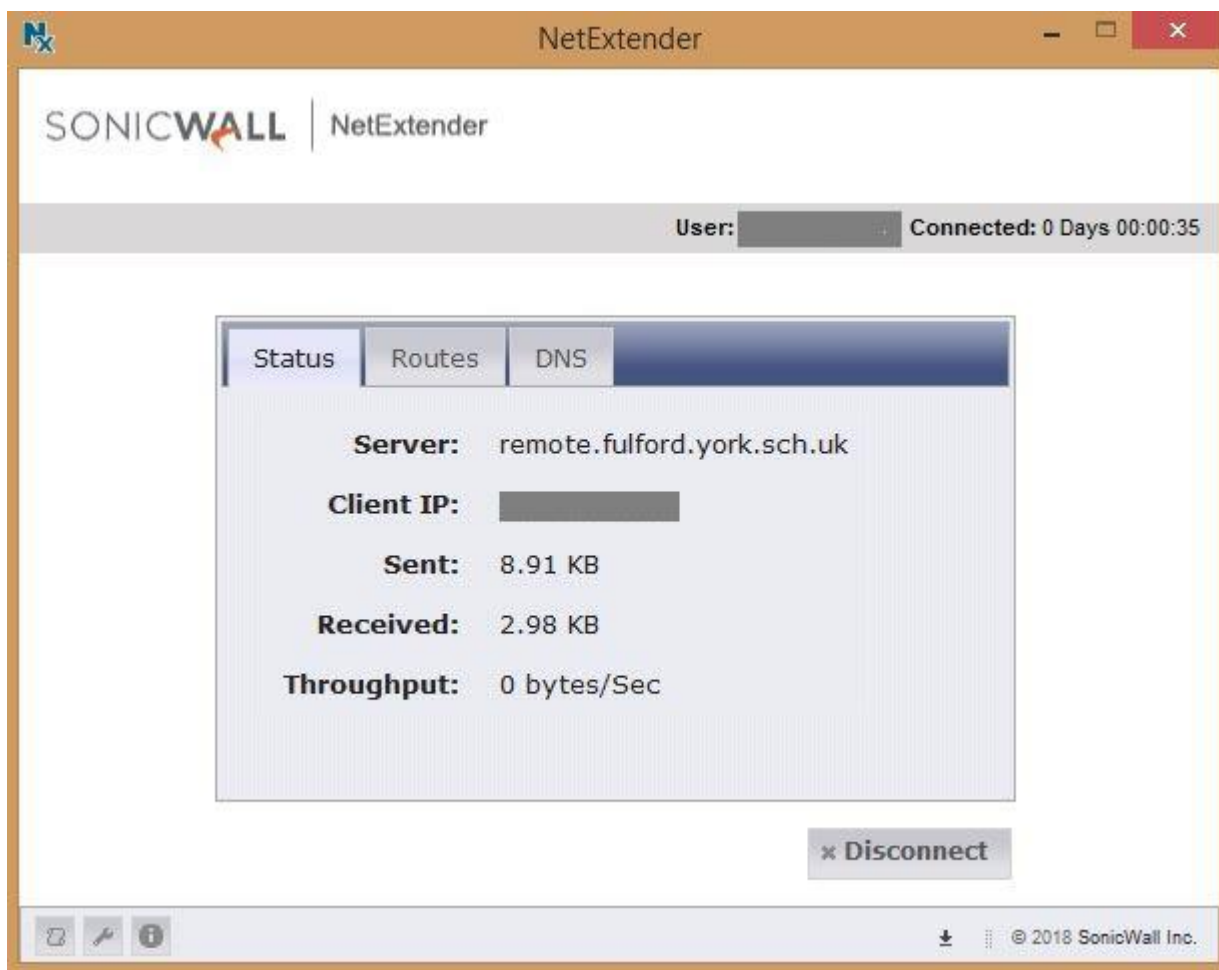
1. To connect to the school network, open NetExtender. The Server and Domain should already be populated as they were specified during install.
2. Enter your username and password, like in the image below and click Connect:



3. A security alert may appear, it is safe to proceed, click Always Trust



NetExtender will now connect to the school network, once connection has established, NetExtender will display some details and will show a Disconnect button. Always click this when you have finished working.



This guide only describes only how to install and connect to the school network, instructions on how to connect to resources will be made available separately.